



# Maison D'Amour West



# Maison D'Amour West



TYP. LEFTSIDE ELEVATION - #4

1/4" = 1'-0" (1:50 = 300)



TYP. RIGHTSIDE ELEVATION - #2

1/4" = 1'-0" (1:50 = 300)

## Maison D'Amour West



TYP. LEFTSIDE ELEVATION - #4

1/4" = 1'-0" (1:50 = 300)

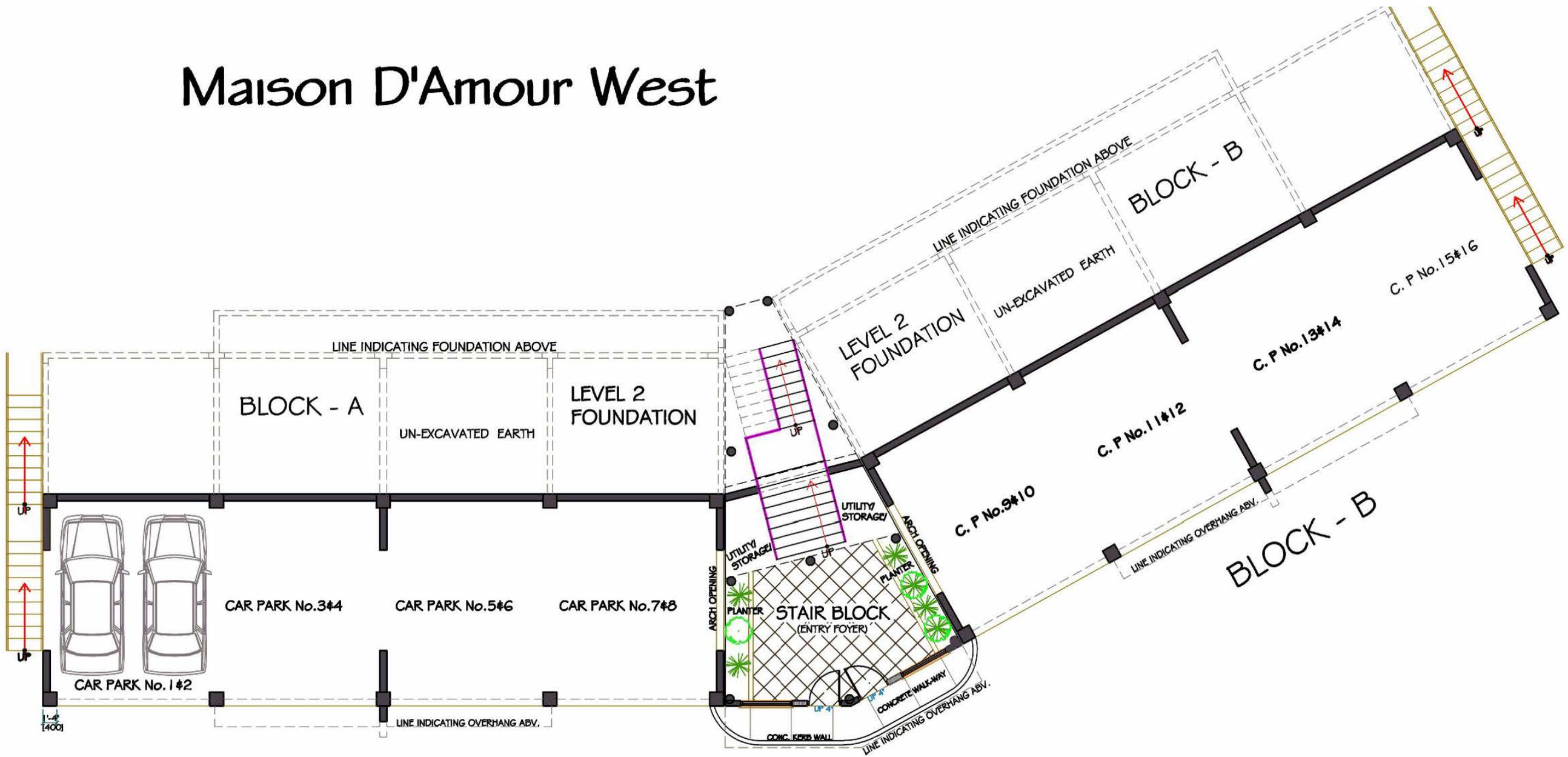


TYP. RIGHTSIDE ELEVATION - #2

1/4" = 1'-0" (1:50 = 300)

## Maison D'Amour West

# Maison D'Amour West



**BLOCK A & B - BASEMENT FLOOR PLAN**

SCALE: 1:125

**BLOCK - A**

# Maison D'Amour West



BLOCK A & B - FIRST FLOOR PLAN

BLOCK - A

SCALE: 1:125